

PINAL COUNTY REPUBLICAN COMMITTEE (PCRC)



PRECINCT COMMITTEEMEN HANDBOOK & RESOURCE GUIDE

THE POWER OF THE PC

TO DELIVER THE MAXIMUM NUMBER OF REPUBLICAN VOTES FROM YOUR PRECINCT

JULY 1, 2023

CHAPTER 1

WHAT IS A PRECINCT COMMITTEEMAN?

*A Precinct Committeeman is the Party official,
directly elected by Arizona's Republican Voters.*

*"We in America do not have government by the majority.
We have government by the majority who participate."
(Thomas Jefferson)*

PRECINCT COMMITTEEMEN (PC):

- **Represents** the Republican Party to the people and is the primary and personal contact between voters, candidates, and elected officials.
- Is a committed, **patriotic "grassroots" volunteer**, whose job is to educate Republican voters in the precincts and ensure that those voters cast their **informed** votes in each election.
- Has a **personal stake in the outcome of elections** and is engaged in shaping America's future. Serves a vital process in determining whether elections are won or lost by creating strong District and Precinct organizations, which are foundational to the Republican Party.
- Spreads the **Republican message** of lower taxes, fiscal responsibility, individual freedom, and a strong national defense.
- **Attends** Party functions, from the regular monthly District meetings to County and State GOP meetings, where you are kept informed about Party events, issues, solutions, and action steps. Enables you to be a key resource about our conservative message, election information, as well as in a position to correct any misinformation about the Republican Party for your neighbors, friends, and family.
- Is the **ONLY statutory representative eligible to vote in the internal Party leadership** elections for District, County, and State, and for delegates to State and National conventions. These elected individuals determine the direction of the Party and the policies and positions included in the Republican Party platform, which is reviewed and revised every four years.

Precinct Committeemen are the VITAL components of representative government.

Chapter 2

WHAT IT MEANS TO BE A REPUBLICAN

PARTY VALUES

The first step in being an effective Republican Precinct Committeeman is to understand what the Party stands for...

The Republican Party of Arizona brings together the political aspirations of a large and diverse group of people who share a set of core values.

*What is a Republican? Republicans are people you see in your community: at work, at church, at the store, and at the ballpark. We come from all walks of life, but our **shared beliefs and values** help shape a strong state and nation where every citizen has the opportunity to succeed.*

We believe conservative candidates will:

- Uphold the Constitution of the United States of America
- Uphold the Constitution of Arizona
- Defend religious liberty
- Support 2nd Amendment rights
- Protect the unborn and all life
- Value traditional marriage
- Expand educational choices
- Support small business owners
- Promote law and order
- Secure our borders
- Fund a strong military and national defense
- Aid Israel
- Limit government, regulations, and taxes

“The only thing necessary for the triumph of evil
is for good men to do nothing.” *Edmund Burke*

Chapter 3

THE BASICS

WHAT IS A PRECINCT?

The precinct is the smallest political unit in the country; each correlate to ONE polling place. A precinct is where elections are won or lost. Most importantly, it is *your* neighborhood. You know the people, the schools, churches, and local businesses. You have your hand on the pulse of the precinct. You understand the assets and challenges of your local community and have a desire to improve it.

Never underestimate the power of the precinct-based leader! It is the PC, actively participating in the Republican Party at the precinct level, who wins elections and promotes Republican values and ideals at the local, state, and national levels.

The Republican Party of Arizona's organization begins with the Precinct Committeeman. Being a PC means utilizing the tools the County and State Republican Party levels provide you to organize and educate the voters in it.

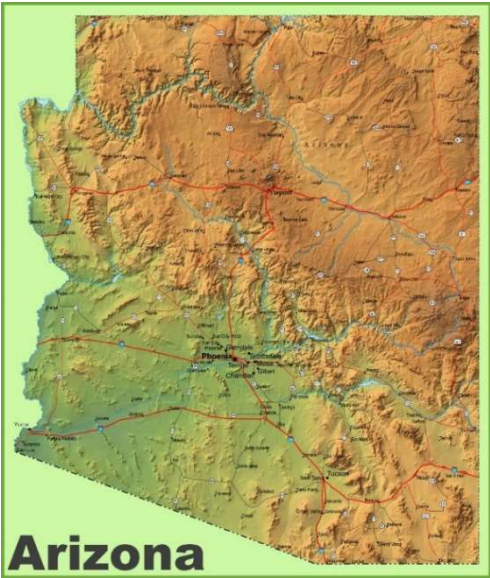
It involves a **minimum** time commitment of **a few hours a month every month** (slightly more during campaign season) and the ability to help on Election Day to help Get-Out-The-Vote (GOTV).

ARIZONA'S POLITICAL ORGANIZATION

Arizona's political structure for EACH recognized political party follows these statutory guidelines: There are **15 Counties** – divided into **9 Congressional Districts**, which are further divided into **30 Legislative Districts (LDs)**. In **Pinal County**, we are further divided into **5 Board of Supervisor Districts** and then subdivided into **Precincts**, representing geographical areas of various sizes and population density.

Twenty of the 30 LDs are in Maricopa County, representing at present the highest number of registered Republican voters in any U.S. County and roughly 66% of total Republican votes cast in Arizona.

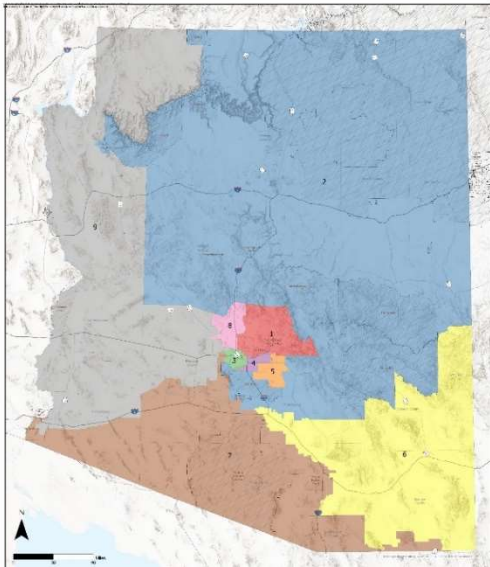
Map of Arizona



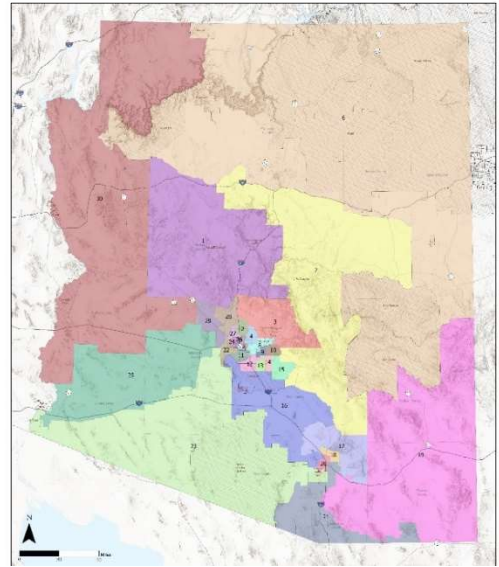
Arizona Counties (15)



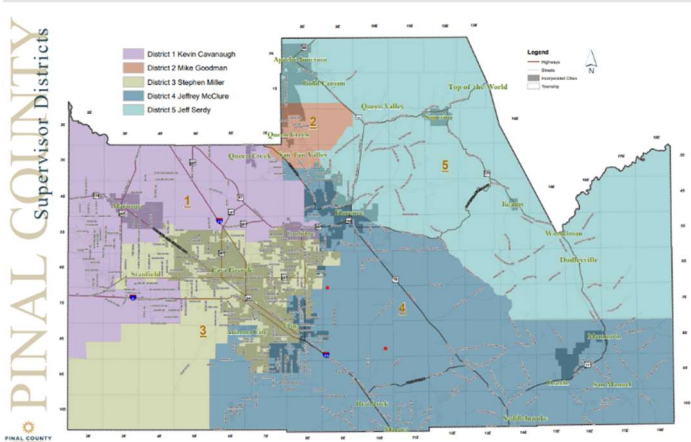
Congressional Districts (9)



Legislative Districts (30)



Pinal County Board of Supervisor District Maps



REDISTRICTING

Every ten years, there is a U.S. Census taken to determine population changes in size and location. With this information, there is a formal **redistricting** process that takes place with the authority to redraw our state's political map from scratch. Arizona is one of only a few states that use an Independent Redistricting Commission (IRC) to draw its congressional and legislative district maps.

The Governor commissions a Board of Redistricting with two Republicans, two Democrats, and one Independent. To be eligible to serve on it, they cannot have been either a PC or held an elected position for the previous five years. It's an unpaid position, working 40 hours a week and traveling all over the state. Once the maps are drafted, the Board holds public hearings.

Most Republicans feel that the selection of Board members after the 2010 census did not reflect those loyal to the Republican platform and who, instead, conceded too much to their Democrat counterparts (i.e., rearranging the map boundaries so that more Democrat voters were placed into previously Republican majority areas). The previous map in 2000 with 5 Republican, 3 Democrat Congressional Districts (CDs) were redrawn in 2010 to comprise 4 Republican, 5 Democrat to create a *dramatic* shift.

For the 2020 census, The Board of Redistricting seemed more competent and far better representative of their political party affiliation. The outcome implemented in April 2022, inevitably required *some* remapping. We believe in the need for each community *to be* a "community," meaning physical boundaries in close proximity that make sense. Although, the overall process has been more equitable, currently some LDs continue to be separated into two CDs, rather than kept cohesively in one. There are a few LDs in other counties that are also part of Pinal County. For instance, LD15 and LD10 are in Maricopa County with a small portion in Pinal County. LD17 is predominantly in Pima County with a few precincts in Pinal County.

Maricopa LD11 encompasses parts of Phoenix South Mountain, Laveen; and all of Guadalupe; representing a diverse range of voter demographics and interests. All of these factors are important to understand for PC recruitment and how best to present voter education.

Redistricting redraws the map to create these political units:

- **Congressional Districts (CDs)** determine the number of U.S. Representatives (2-year terms).
- **Legislative Districts (LDs)** determine the number of elected legislators in Arizona's Legislature.

There are 2 Representatives and 1 Senator for each LD (2-year terms).

Republicans hold a 2-seat majority in each chamber.

Representatives: 2 Representatives x 30 Legislative Districts 60 Representatives

Senators: 1 Senator x 30 Legislative Districts 30 Senators

90 Legislators in total

There is a renumbering process that results in finalizing the new political maps for Legislative Districts (LDs).

- Some **Precincts** are affected, such as large geographical ones with greater population since the last census, that are then divided into two or even three precincts. With the boundary changes, some "new" Precincts were created.

VOTER IDENTIFICATION CARD

Like knowing your name, it's **important for each PC to know their CD, Supervisor District, LD, Precinct, City/Township, and School District(s)**. These are located on your Voter ID card, provided by YOUR County Recorder's Office (e.g., Pinal County Voter ID card shown).



VOTER IDENTIFICATION CARD
Pinal County, Arizona
Dana Lewis, Recorder



PCT	ID NUMBER	PARTY	DATE REG
25.12	123456789	REP	9/23/2000

JOHN JAMES SMITH
1234 N PINAL RD
ANYTOWN, AZ 85123

CONGRESS DISTRICT	LEGISLATIVE DISTRICT	BOARD OF SUPER	JUSTICE OF THE PEACE
2	16	4	3



Abbreviations:

PCT – Precinct where Voter resides

ID Number – Specifically assigned to Voter

PARTY - POLITICAL PARTY – REP – Republican

DATE REG – Date Registered as a Voter

VOTER NAME & ADDRESS – Name of Voter & Residence Address

CONGRESS DISTRICT - US Congressional District

LEGISLATIVE DISTRICT – State Legislative District

BOARD OF SUPER - Board of Supervisors District

JUSTICE OF THE PEACE - JP Precinct

PC QUALIFICATIONS

1. Any **registered Republican** is eligible to become a PC in the precinct in which he or she lives.
2. All you need is heart and the desire to roll up your sleeves to help achieve Republican victories.

HOW TO BECOME A REPUBLICAN PC

Established by state law for election purposes, each precinct is allotted ONE precinct committeeman, **plus** ONE additional PC for EVERY 125 registered voters (or major fraction thereof) of the specific political party in that precinct. The more registered Republicans in a precinct = more PCs allowed in that precinct.

REPUBLICAN VOTERS ALERT! Once redistricting is finalized, each County issues a new, updated Voter ID Card. In some Counties, MANY Republicans had their party affiliation altered to read PND (Party Not Designated). Since Independents could vote in the 2022 Primary, the downside was being taken off the candidate lists for voter education regarding who and what to vote for.

However, it's **the number of registered Republicans that determines the Precinct Committeeman (PC) quota**. I daresay we are short PCs! As we reconstruct what happened and how many were affected, please **CONTACT ME** at chair@pinalcountygop.org if you are/were a voter impacted in this way. Please send name, county, precinct name, email, phone optional, and whether you had any contact with Motor Vehicle Department online or in person [several noted they had updated their voter registration online to be removed from Mail In Early Voting ballots], or any other contact that would have edited your registration. PCs, compare your pre-June 1 walklists for Republicans compared to post-June 1. Check for discrepancies, to see if the voter(s) changed to Independent OR if it's the County's mistake.

Ballot Election: During the primary election of even years, such as 2022, Republican voters in your precinct elect one committee person, plus one additional PC for each 125 Republican voters registered in the precinct. **THIS APPLIES TO ALL PCs (elected and those to be appointed) as all terms will expire October 1, 2024.**

To become an elected PC, you must:

1. Complete the Affidavit for Nomination with the County Registrar. Your District Chair or County Chair will have the form, instructions, and the deadline to submit everything.
2. Collect the required number of valid signatures from Republicans in **your precinct**. Typically, this means having to collect about 10 signatures, including your own.
3. Every PC must turn in the above documents; your County Election Department will determine if your name will be on the ballot. If there are no irregularities, your name will be placed on the Primary Election Ballot, **unless there is no need to do so because the seat is uncontested.**

Note: If you did not file your nomination petition in time, you can also fill out a Write-in Candidate form. For election as a write-in, you will need as many write-in votes as you would have needed signatures on your nominating petition (typically 10).

Contested PC seat means that more individuals have filed the necessary signatures than the Precinct's quota has room for. For example, there are 7 PCs allotted for a Precinct. If 8 candidates are successfully accepted on the ballot, the "7" seats are contested, and all 8 names will appear on the Primary's ballot. It's advisable to reach out to your Precinct's voters to introduce yourself and ask for their vote; consider leaving a business card or flyer with them. The top 7 vote-getters will be elected.

If only 7 submit their paperwork and there are no write-ins, all 7 will be recognized as PCs *without* being on the Primary's ballot.

PC Term of Office: All PC terms run from the Primary Election of an even year to the Primary Election two years later. **Thus, even if you become an appointed PC in early 2023, to remain a PC for a second term, you must become either a ballot-elected PC in the Republican Primary in 2024 or be appointed again for whatever the remainder of the 2024-2026 term.**

Simply stated, **the term of a PC is TWO years or until the next primary election, whichever comes first.**

Whether ballot-elected or appointed, all PCs serve the same purpose: to get Republicans elected at the local, state, and national levels. PCs have certain rights and privileges by state and county statutes and Party bylaws:

- All PCs are eligible to seek election as a delegate to national conventions.
- Elected PCs elect a slate of qualified replacements for resigned state legislative seats and are responsible for filling candidate vacancies upon the death of a candidate, for the general election.
- The total of all appointed and elected PCs for a given county constitutes the County Committee of the Republican Party of Arizona.

Appointment: Most PCs start out as appointed PCs because state elections are only held every two years. It is very easy to apply for the PC position; it requires that you complete a short form, which is then approved by your District Chair and County Chair, according to our Bylaws. Your District or County Chair or officers will assist you in the process. The County Party then recommends you to the Board of Supervisors for your County, which in turn officially appoints you as a Precinct Committeeman **after verifying your voter registration and precinct.**

PCs on Wait List. While there is a limit to the number of PCs per precinct (a "quota" based on the number of Republican voter registrations), there is no specific limit to the number of **Associate Precinct Committeepersons** the District may choose to designate. Associate PCs can participate in PC tasks and attend the District meetings, except they are not eligible to vote (subject to Bylaws).

Vacancies can be filled as openings are available after the primary election; or if a PC moves out of his/her Precinct, or otherwise stops being a PC due to schedule conflicts, health, or death. These follow the same procedures as an Appointed PC.

PC JOB DESCRIPTION

The Precinct Committeeman (PC) serves as the main communication source between the Republican Party of Arizona and current and future Republicans in his or her precinct. The PC is charged with connecting the people in the precinct to the Republican Party of Arizona, and the Party to the people.

The Precinct Committeeperson is responsible for filling the roles described that follow, keeping in mind that it is **okay to begin slowly** working on one or two items at the start. Your District or County Chair is always available to provide support and answer questions. Remember, you are providing a wonderful service to the Party and to your community. **Have fun!**

There are TWO meetings that are mandatory to elect County and your District officers:

COUNTY – Pinal County Republican Committee

According to our Pinal County Operating Agreement (Bylaws), Revised June 2022:

ARTICLE VII – MEETINGS.

Section A. The Statutory Organizational Meeting shall convene, in accordance with AZ GOP guidelines, as provided by by law for the purpose of organizing itself by electing from its membership the required statutory officers and for the transaction of such business as may properly come before it. The Meeting shall be held no later than December 10th of even years at a time and place to be designated by the outgoing County Chairman. Notice of the time and place of the Meeting shall be published by the Secretary to all Precinct Committeemen duly elected in the State Primary Election of that even year, not less than ten (10) days prior to the meeting.

Section B. The Mandatory Meeting of the PCRC, LLC shall be held prior to the third Saturday in January of each even year or as otherwise determined by the County Chairman, for the purpose of receiving reports of officers and for the transaction of such business as may properly come before it. The Meeting shall be held at a time and place to be designated by the County Chairman. Notice of the time and place of the Meeting shall be published by the Secretary to all Precinct Committeemen no less than 10 days prior to the Meeting.

ARIZONA - **For those PCs elected in their respective District/County to be State Committeemen**, there is a **CRITICALLY IMPORTANT meeting held EACH JANUARY** to elect State officers, and vote on Party Platform Resolutions, and any amendments to the State Party Bylaws.

RPAZ (AZGOP) Bylaws, Revised January 22, 2022:

ARTICLE III. Meetings. 1. Notice.

A. *Statutory Organizational Meeting*

The statutory organizational meeting shall convene no earlier than ten days after the last county statutory meeting and no later than the fourth Saturday in January in **each odd-numbered year**. At the meeting, the state committee shall organize itself by electing from its membership a chairman, a secretary, and a treasurer and shall transact such other business as may properly come before it.

B. *Mandatory Meeting*

The mandatory meeting of the State Committee shall be held in January of each of **even-numbered year** to receive reports of officers, to elect non-statutory officers, and to conduct such other business as may properly come before the meeting.

Proxies – Arizona law allows parties through their bylaws to use proxies at organizing meetings. See A.R.S. 16-828.

ESSENTIAL PRECINCT COMMITTEEMENT (PC) RESPONSIBILITIES

1. **Attend** District meetings, usually 1 per month for training, education on issues and legislation, and meeting PCs, candidates, and elected officials. If you can't make your own, find another because you need the information they are sharing. With new PCs added every month, there may be some repetition; look for at least a nugget each time that's something different to add to your skills.
2. **Obtain** the precinct map and walking lists (also known as the **125 Walk List** because it starts with multiples of the 125 registered Republican voters who elected you and fellow PCs in your precinct) from your LD Chair or County Chair. Familiarize yourself with the geography of the precinct and meet your neighbors. From a safety standpoint, and because it's more fun, go in pairs. Have another PC, family member, or a neighbor come along. If unable to walk, be a driver for someone else. At times, you may be called to help others as much as possible.
3. **Get to know** your **Republican, Independent and Party Not Determined (PND)** neighbors. Develop relationships.
 - a) **Provide** a Republican business card with your name, email, and phone (**see Business Card Order Form in Resources area**). These can also be stapled to a palm card flyer or postcard, especially when the voters are not at home to show you stopped by [sample in Resources].
 - b) **Canvass** the precinct using the walking list or call list provided by your Precinct Captain or District Chair. Keep track of changes in voter data on your lists (change of address or phone, candidate preferences, etc.) and update the voter database file with the new data (through your Chair or local Republican headquarters).
 - c) **Recognize** who the snowbirds are (e.g., June-August no trash out at curb). Check with them if they will be back to vote. It's illegal for the USPS to forward a ballot; however, you can help them to get the form asking to mail it to another address one time.
 - d) **Host** a house party and invite your neighbors to talk about politics and issues concerning your precinct.
4. **Drive** your neighborhoods periodically to note for sale signs to update your walking list, but also for move-ins.

SAMPLE SCRIPT: "Hi, I'm [YOUR NAME], one of your neighbors, and wanted to welcome you to the area...Have you had a chance to update your voter registration?"

A Republican realtor in your area may be able to provide you regular lists regarding move-ins; check with your Precinct Captain or District Chair for updated lists.
5. **Register** new Republican voters, either at their door or direct them to online at "Voter Registration" at www.servicearizona.com. Always have at least one Voter Registration form on hand. These can be obtained at Pinal County Recorder's Office in Florence or satellite Recorder's Office near your district. One Voter Registration form is included with your Training Manual.
 - a) For each household, make sure all eligible voters in the home are registered. Those 17 years of age who will be turning 18 by the date of the next election are eligible to register.
 - b) Contact members of groups you belong to and register them to vote as Republicans, in person or online.
 - c) Canvass the non-party-affiliated voters in your neighborhood; encourage them to re-register as Republicans. For example, Democrat Hispanics who are pro-life.
6. **Participate** in District/County Republican Party events and activities including helping your local Republican Party by staffing registration drives and tables, by supporting local candidates, and by taking part in local fundraising efforts.

7. Be a **visibly proud Arizona Republican** – display yard signs, window signs, campaign buttons, bumper stickers; and supply your neighbors with materials and yard signs during campaign seasons.
8. **Recruit new PCs and other volunteers** in your precinct and communicate with them regularly. Adding volunteers means you can subdivide the precinct for more personal contact with the voters. It also means providing additional support and backup for each other and for your candidates. Develop winning strategies by utilizing the group’s collective skills, contacts, and energy to get the job done!
9. **Educate** yourself on key issues and topics, candidates, and ballot propositions. You are a resource to your precinct’s voters. Oftentimes, they will come to you for your opinion on current matters.
10. **Be a candidate** yourself to serve as a policy maker.

PARTY VOTING RIGHTS OF A PRECINCT COMMITTEEMAN

As noted earlier, precincts are organized into Board of Supervisor Districts. All PCs in a District are members of the Pinal County Republican Committee (PCRC), a political organization created under and subject to state law. The BOS District is led by a District Chair who is **elected by the PCs**.

The District organization is governed by PCRC and its Bylaws, as well as Arizona Revised Statutes.

Some PCs may be extremely motivated, active, and participate in the full spectrum of roles. Others may be more limited in what they are able to do, but every PC is encouraged and expected to contribute to the overall effort. Don’t be a “paper” PC (aka signed up but inactive except to cast an occasional Party vote, albeit casting an *uninformed* vote since not participating in educational learning provided at meetings, etc.).

REGISTERED REPUBLICAN VOTERS elect →

Precinct Committeeman ELECTS →

- Precinct Captain (elected among all the PCs in that precinct as the lead point person)
- BOS District Chair and other officers (elected by fellow PCs)
- Pinal County Republican Committee County Chair and Executive Officers (elected by fellow PCs)
- State Committeemen (composed of PCs who have been elected by fellow PCs in their Districts/County) elect →
State Party Executive Committee Chair and Officers
- Representatives to the State Party Convention elect →
National Officers and Delegates to National Party Convention

PCs MAKE THE DIFFERENCE DURING ELECTION CAMPAIGN SEASON

You will be called upon to do some of the following during election campaign season:

1. Reach out to all who want to volunteer within your precinct and get them active (utilizing the Party's volunteer database).
2. Obtain petition signatures and \$5 Clean Election contributions for Republican candidates to qualify them for the ballot.
3. Distribute Party and candidate literature through door-to-door canvassing.
4. Help identify where Independent and Party-Not-Designated (PND) voters stand regarding our Republican candidates and issues.
5. Hold house parties for Republican candidates.
6. Promote Vote-by-Mail (VBM) where needed due to health or travel that restricts voting on election day; and In-Person Early Voting among Republicans in Pinal County. Election integrity legislative measures and litigation are a 2023 priority. Despite 2022 tabulator issues, encourage Election Day voting in person.
7. Help the Party to ensure early ballots are returned ("chase" ballots with phone calling).
8. Help ensure a strong and effective Get-Out-The-Vote (GOTV) effort in the final four days of the campaign. The Party will design the GOTV Plan with your help to implement it.
9. Recommend Republicans within your precinct to work as **Poll Workers on Election Day**; these are our front line of defense for voter protection. Recommend Poll Observers. Be a "Citizen Election Observer". Contact your Precinct Captain or District Chair if you would like to be a Poll Worker or Poll Observer.

To do the above tasks, we need to register every likely voter we find in each of our precincts.

Believe it or not, only 70% of Arizona's eligible voting-age population is registered to vote today. Not only do we have new individuals and families moving to our state every day, we have hundreds of potential voters to reach out to in our very own neighborhoods right now.

These are the people we know as friends, people we know in our clubs, people we see and chat with at the grocery store. But for whatever reason, they are not voting. We can change this!

And, in addition to demonstrating a bit of your own leadership potential, you will make some great friends along the way that will last you a lifetime!

**VOTING IS
THE RIGHT ON
WHICH ALL
OTHER RIGHTS
DEPEND.**

Thomas Paine



Precinct Committeemen are the bedrock of the Republican Party of Arizona!

Remember, the Republican Party believes in "community". Take this opportunity to get to know yours better. Ask your neighbors their opinions on issues. Invite them to Republican Party events, town hall meetings with elected officials, and social gatherings with our Republican clubs.

Asking people you meet to volunteer and get active in one or more organizations is a great way to help someone become a dedicated Republican voter! In election years, your efforts should focus on preparing to eventually "get out the vote" for Republican candidates on the ballot in your precinct!

HOW ARIZONA'S REPUBLICAN PARTY IS STRUCTURED

Under Arizona State Revised Statutes (i.e., legislated law. "A.R.S." for short), there are three recognized political parties on the printed ballots for a given election: Republican, Democratic, Libertarian (Green is not).

For partisan races (i.e., when the candidate declares his/her political party as in the case for Governor), the Primary Election may have several candidates from a party for each available seat. The primary declares a winner for each open seat to then run in the General Election.

The General Election typically has one candidate per open seat in partisan races.

It all "starts" with the Republican Precinct Committeeman, as the largest group of elected representatives. It is **THE pivotal goal to have every PC opening filled** with values-based, Constitutional (i.e., defined as the Founding Fathers created it), registered Republicans. From the PCs, come policies, platform, strategies, Party administration, and elected officials.

REPUBLICAN PARTY STATE, COUNTY AND LOCAL STRUCTURE

12 OFFICERS of the STATE COMMITTEE elected by State Committeemen for 2-year terms are:

- State Chairman
- Secretary
- Treasurer

Elected during State Statutory Meeting held in January on odd-numbered years

- 1st Vice Chairman
- 2nd Vice Chairman
- 3rd Vice Chairman
- Assistant Secretary
- Assistant Treasurer
- Sergeant at Arms
- Assistant Sergeant at Arms

Elected during Non-Statutory Mandatory Meeting held in January on even-numbered years

- National Committeeman
- National Committeewoman

Elected during State Convention every four years for 4-year terms

The STATE EXECUTIVE COMMITTEE CONSISTS OF:

- 12 elected officers of the State Committee (listed above)
- 15 County Chairs
- 15 County 1st Vice Chairs
- 15 County 2nd Vice Chairs
- 27 Members-At-Large (3 from each Congressional District)
- 30 Legislative District Chairs (non-voting)
- President of the Arizona Federation of Republican Women, based on 2,000+ membership

The STATE COMMITTEE CONSISTS OF:

- 15 County Chairs
- State Committeemen elected by each precinct's PCs (one member for every three elected PCs)

COUNTY COMMITTEES (PINAL COUNTY REPUBLICAN COMMITTEE):

Each includes all PCs within that county. In Pinal County, we meet on or before December 10. Other Counties meet in January to elect a Chair, 1st & 2nd Vice Chairs, Secretary, and Treasurer.

LEGISLATIVE DISTRICT (LD) COMMITTEES:

Exist in counties of more than 500,000 people (Maricopa and Pima Counties) and include all PCs within that Legislative District.

In Pinal County, we are further divided into **5 Board of Supervisor Districts** and then subdivided into **Precincts**, representing geographical areas of various sizes and population density.

PRECINCT COMMITTEEMEN:

Elected one per precinct, plus one additional for each 125 registered voters of that party as of March 1 of the preceding general election year. Arizona has (April 2022): **1,703 precincts statewide**, up from 1,489 in 2021 (including 906 precincts in Maricopa County, up from 743 in 2021). The increased number of precincts\ due to redistricting shows a dramatic need to fill EVERY PC opening. Locate the statistics for your LD/County at <https://azsos.gov/elections/voter-registration-historical-election-data>.

Organizational Diagram



For clarifying the image at left:

- **Precinct Committeemen** elect their County Chair and officers. PCs elect the **State Committeemen** from their respective precinct. PCs elect **State Convention Delegates** who then elect the National Committeeman and Committeewoman.
- **State Committeemen** elect the State Party Chair, Vice Chairs, Secretary, Assistant Secretary, Treasurer, and Assistant Treasurer. They also elect Congressional District Members-At-Large.

PINAL COUNTY

REPUBLICAN PARTY

ORGANIZATIONAL STRUCTURE

